



VENTURE
CHURCH

Intertestamental Period

Session 3: Social, Religious, and Political Landscape

Joshua Tallent, 10/30/2024



Jews and Gentiles

The image shows the Maison Carrée in Nîmes, a well-preserved Roman temple. It features a portico with Corinthian columns and a pediment. The temple is set in a square with modern buildings in the background. The sky is blue with some clouds.

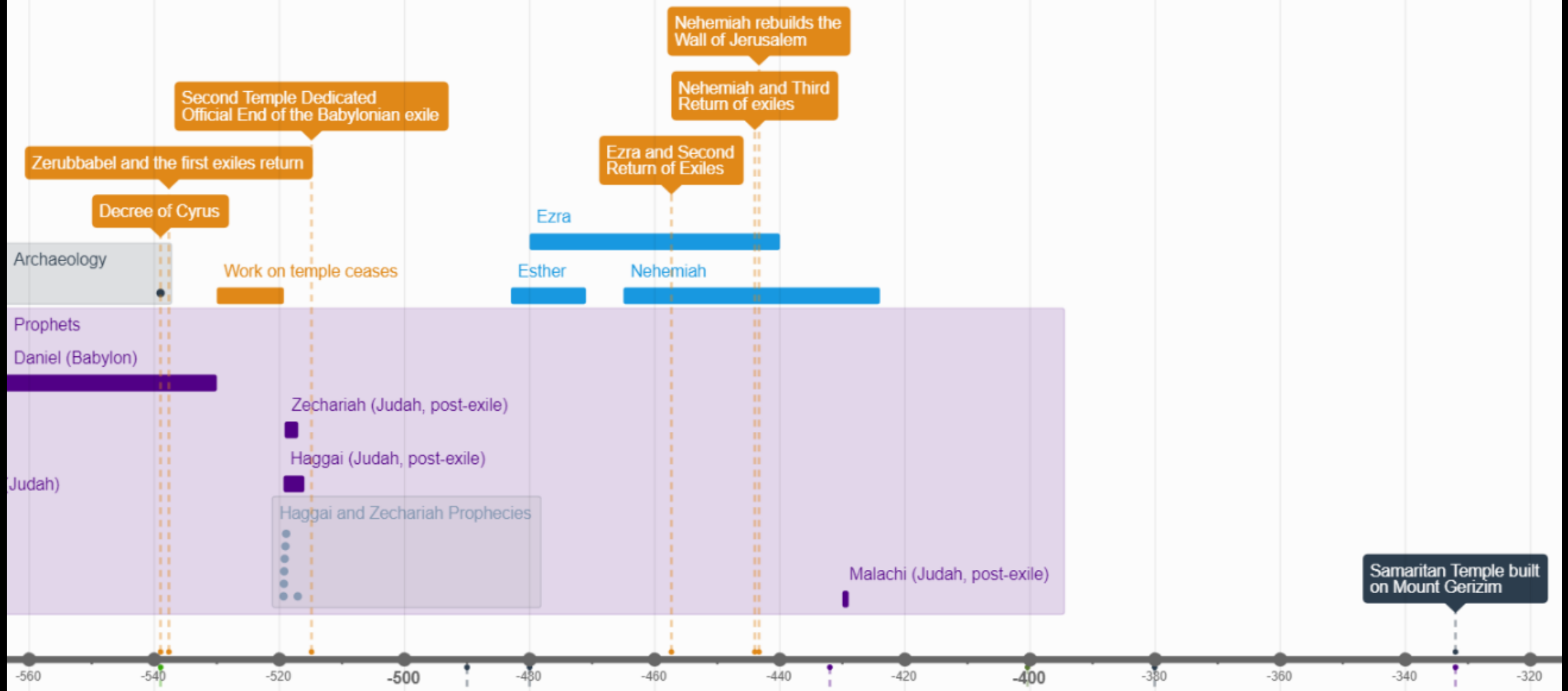
Roman Religious Laws

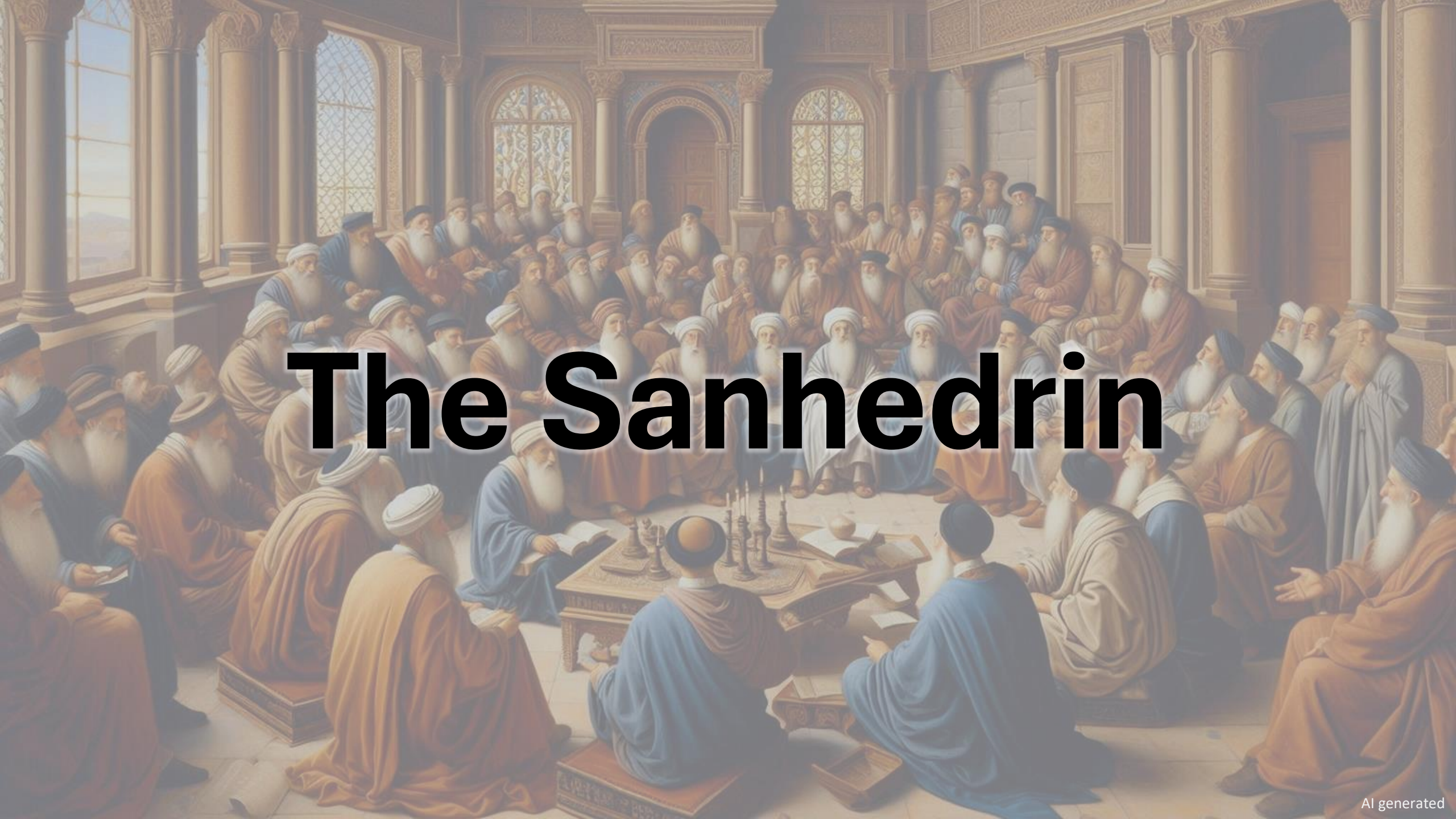
The image shows the interior of a synagogue, characterized by its extensive use of wood. Several thick, square wooden columns support a high ceiling with exposed wooden beams. In the center, there is a raised platform or bimah with a decorative wooden archway above it. The floor is covered with a dark, patterned rug. The overall atmosphere is warm and traditional.

Hasideans

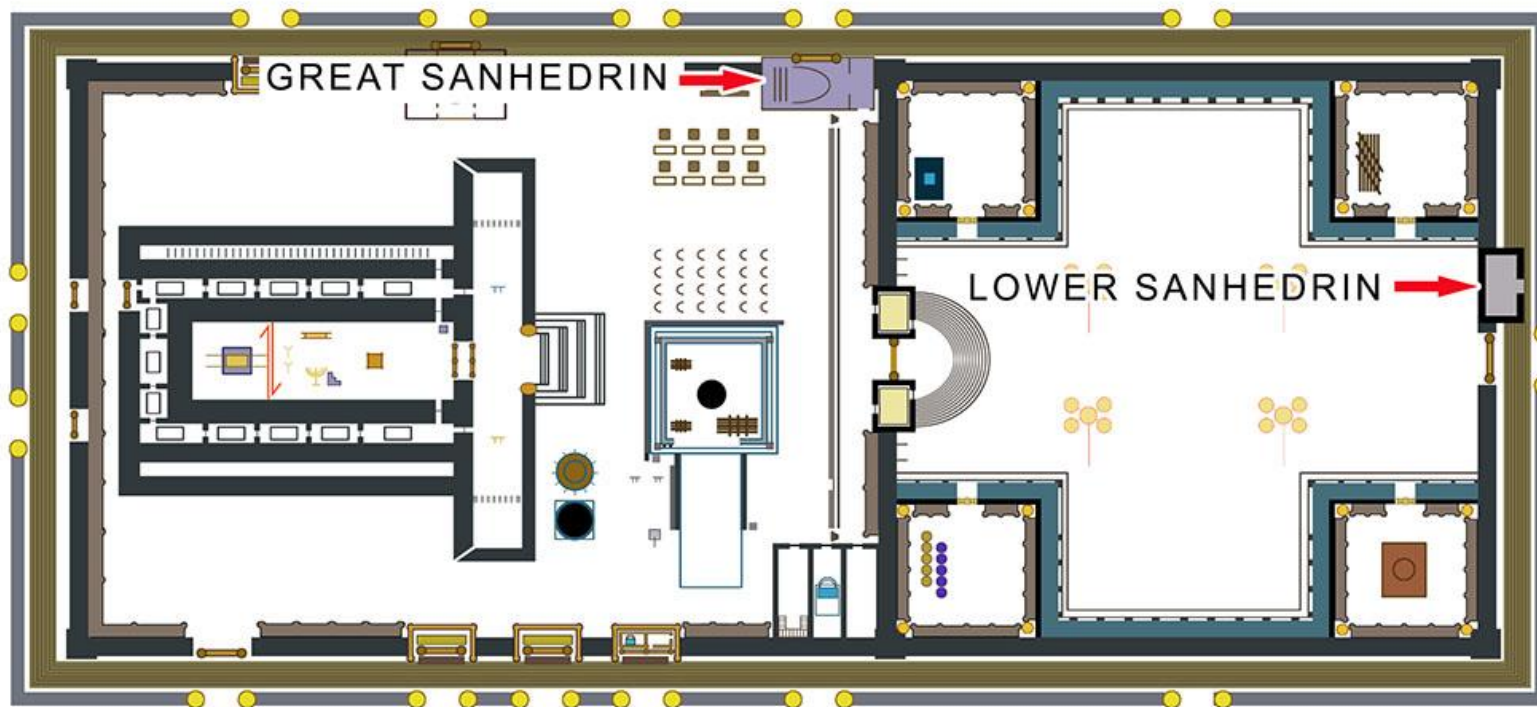
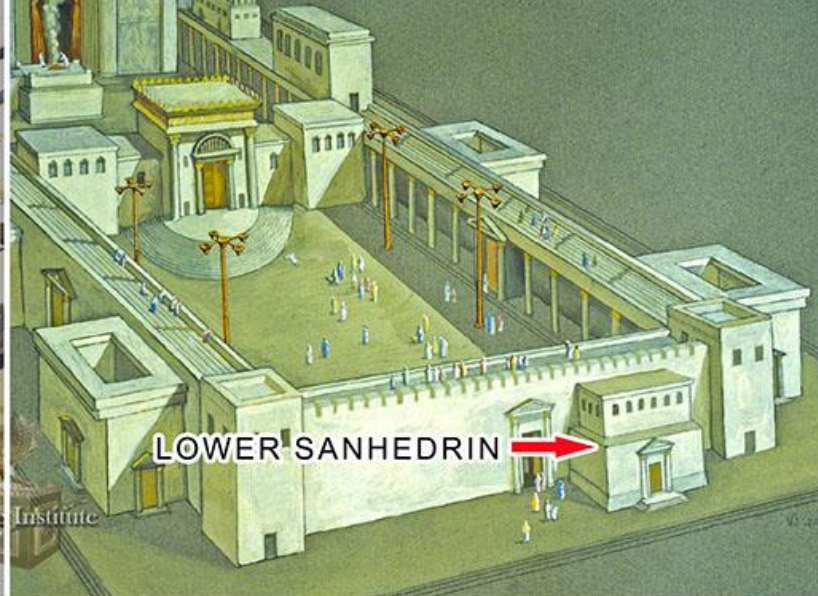
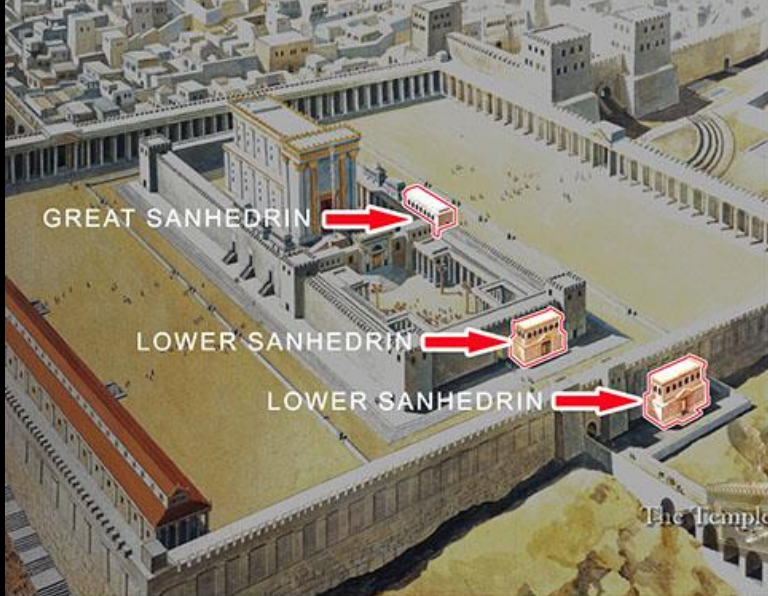
A detailed illustration of a historical assembly of men in traditional Islamic attire, seated around a table with books and food, in an ornate room. The scene is set in a grand, intricately decorated interior with high ceilings and patterned walls. The men are dressed in long, flowing robes and various styles of turbans. Some are looking towards the center, while others are engaged in conversation or reading. The table is laden with several large, open books, small bowls of food, and a central vessel. The overall atmosphere is one of serious study and discussion.

The Men of the Great Assembly





The Sanhedrin



Pharisees



Pharisees

- The authority of the Prophets (*Neviim*) and the Writings (*Ketuvim*)
- The eternal nature of the soul
- The resurrection of the dead
- Eternal punishment for the wicked and reward for the righteous
- The coming of the Messiah
- The Messianic Kingdom
- The existence of angels and other divine beings

“The scholars and the Pharisees sit in the seat of Moses, so whatever they tell you, observe and do it.”

- Matthew 23:2-3a

Scholars (Scribes)

“because they devoted so much time to the Bible, the first Sages were called: Those who count [*soferim*], because they would count all the letters in the Torah, as they would say that the letter vav in the word ‘belly [גַּחֲוֹן, *gaḥon*] is the midpoint of the letters in a Torah scroll.”

- b. Kiddushin 30a



Sadducees

“Didn’t we learn in a mishna: Do not be sure of yourself until the day you die, as Yoḥanan the High Priest, who served in the High Priesthood for eighty years and ultimately became a Sadducee. Even one who is outstanding in his righteousness can become a heretic.”

- b. Berakhot 29a

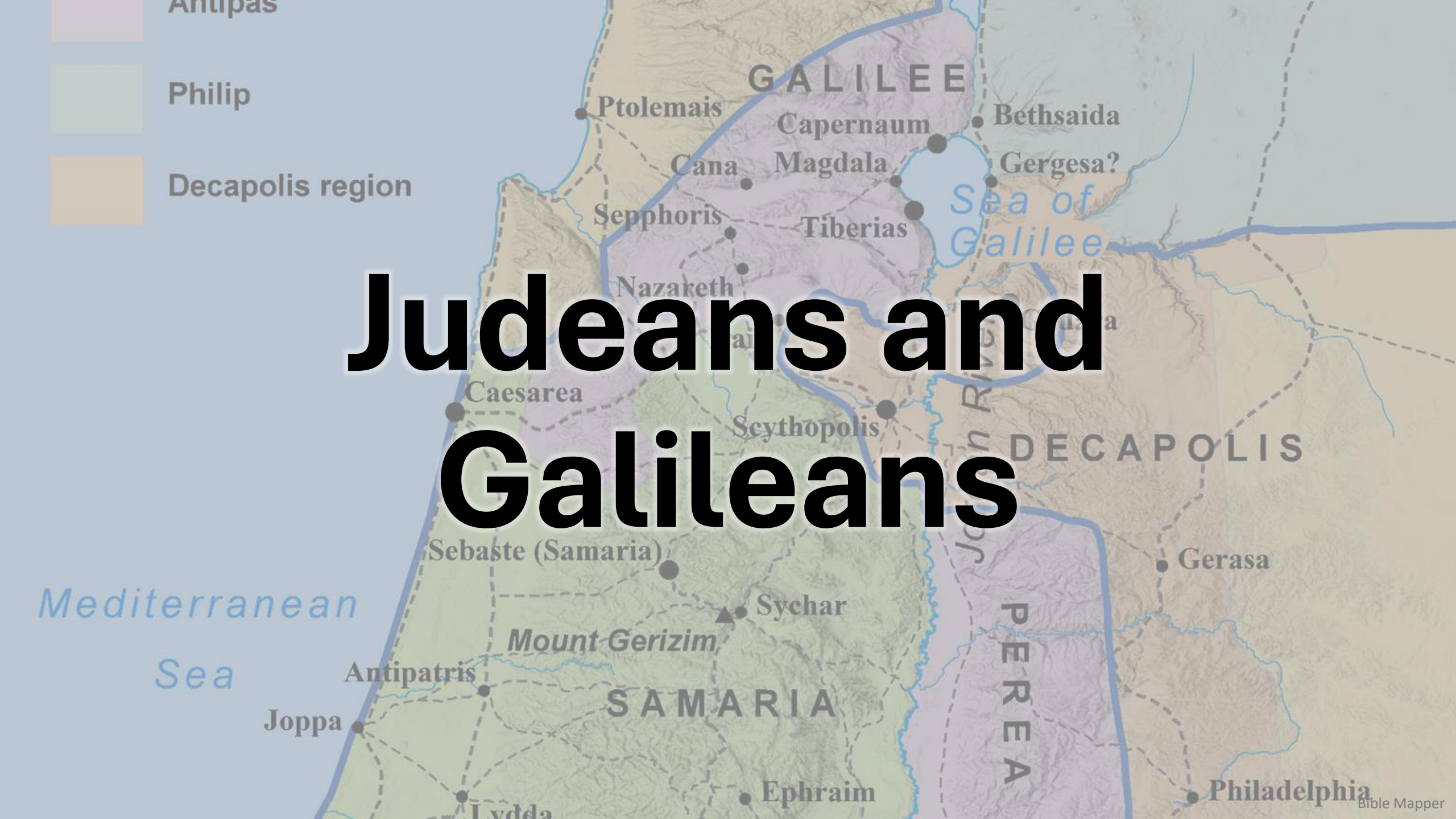
Sadducees

- ~~The authority of the Prophets (*Neviim*) and the Writings (*Ketuvim*)~~
- ~~The eternal nature of the soul~~
- ~~The resurrection of the dead~~
- ~~Eternal punishment for the wicked and reward for the righteous~~
- ~~The coming of the Messiah~~
- ~~The Messianic Kingdom~~
- ~~The existence of angels and other divine beings~~



People of the Land

Judeans and Galileans



Philip

Decapolis region

GALILEE

DECAPOLIS

SAMARIA

PEREA

Mediterranean
Sea

Sea of
Galilee



“However, while all Israelites in Israel in the first century adhered to a ‘common Judaism,’ Galileans ‘had a different social, economic and political matrix than Jews living in Judea or the Diaspora.’”

- Dr. Markus Cromhout, quoting J. L. Reed



Samaritans



Essenes

A photograph of a desert canyon with layered rock formations and a winding riverbed. The word "Essenes" is overlaid in large, bold, black text.



Caves near Qumran. Photo by Joshua Tallent



Qumran mikveh. Photo by Joshua Tallen

p1008



Tefillin found at Qumran. © The Israel Museum, Jerusalem, by Yigael Yadin



Zealots

A painting depicting two men in a landscape. One man, with a beard and wearing a brown robe, stands on the left, looking towards the other man. The second man, with a long white beard and wearing a brown robe and a red cap, sits in a wooden chair on the right, looking back at the standing man. The background features rolling mountains under a cloudy sky. In the foreground, there are stacks of various pottery items, including jars, vases, and bowls, arranged on the ground. The overall scene is set in a rural, outdoor environment with a dirt path.

Hillel and Shammai

